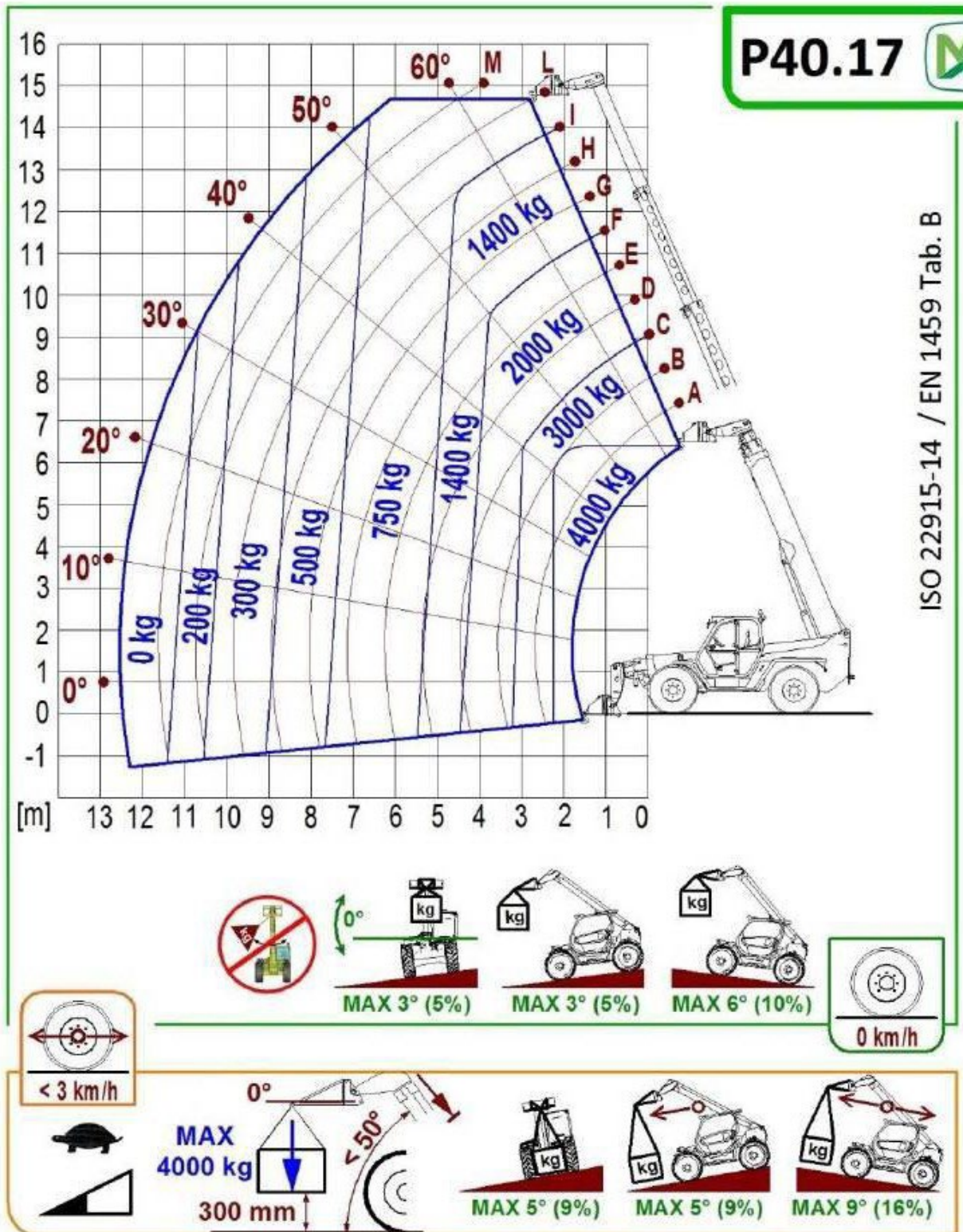


# CPCS Technical Test - Theory

## Lifting Capacity Chart - A17E & A77



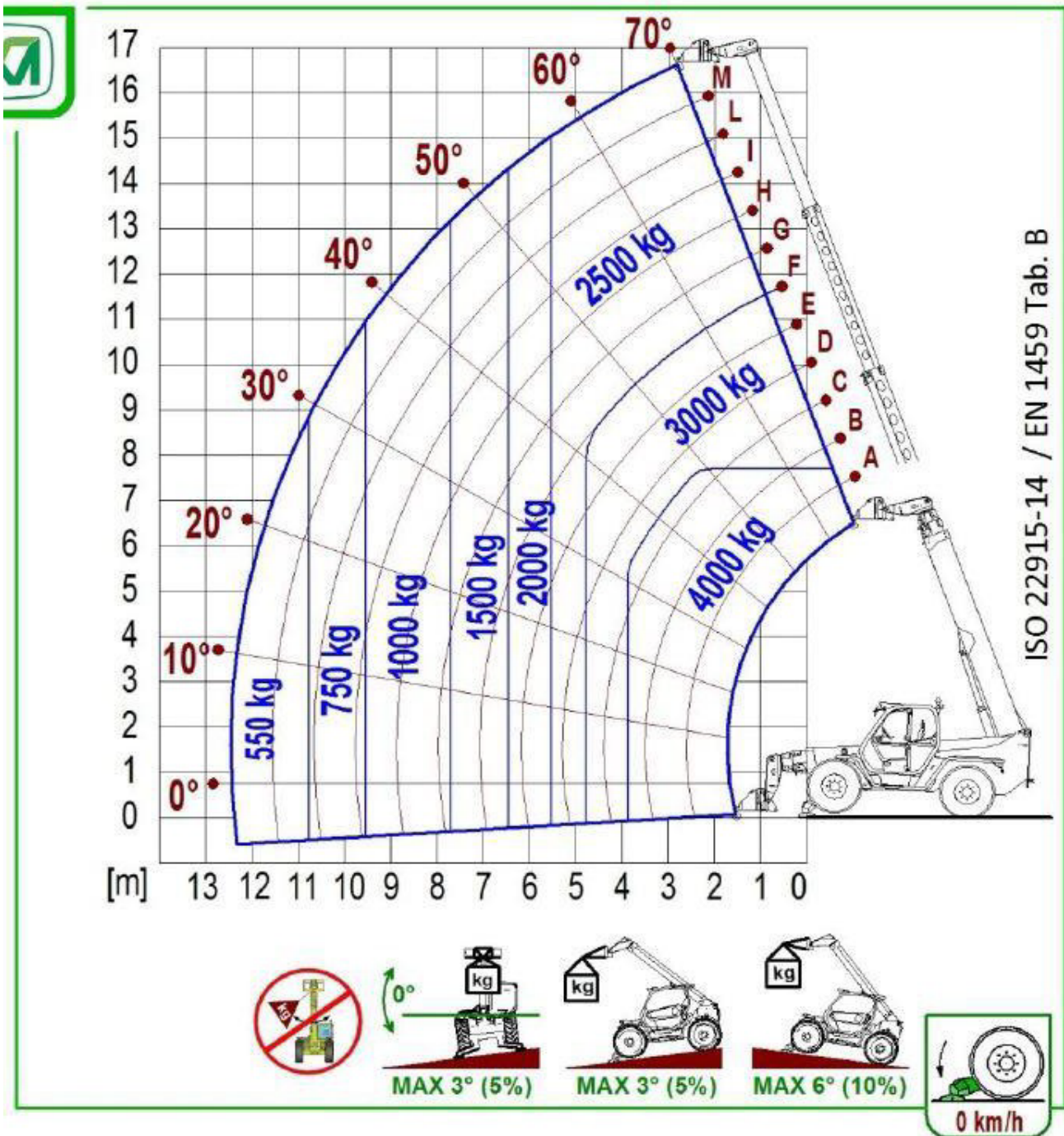
AN NOCN JOB CARD



Information provided is reproduced with kind permission of Merlo. The data shown is correct at the time of issue and Merlo retains the right to alter any specification without notice. For CPCS testing activities only and not to be used for operational activities. CPCS and its associate businesses make no representation on behalf of Merlo.

# CPCS Technical Test - Theory

## Lifting Capacity Chart - A17E & A77



405/70-24 14PR MITAS	(4,0 bar)
405/70-24 14PR BKT	(4,0 bar)
445/65 R22.5 169F MITAS	(6,0 bar)
18-22.5 MICHELIN XF-TL	(7,5 bar)
18 R22.5 16PR MITAS	(4,5 bar)
400/70-24 158A8 MICHELIN	(4,5 bar)

## A1000

**MAX**

**12,5 m/s**

093542

Information provided is reproduced with kind permission of Merlo. The data shown is correct at the time of issue and Merlo retains the right to alter any specification without notice. For CPCS testing activities only and not to be used for operational activities. CPCS and its associate businesses make no representation on behalf of Merlo.